

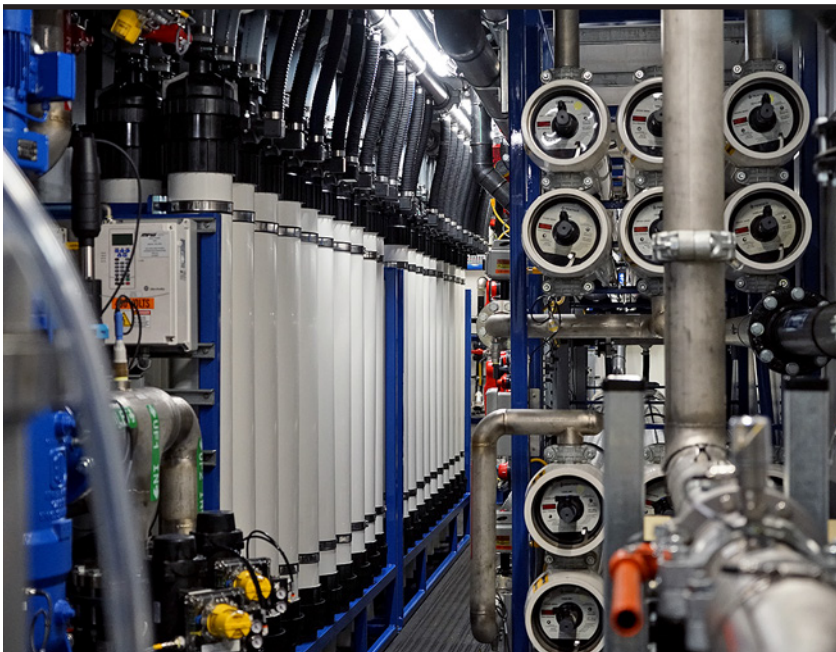
# Mobile UF/RO Combination

**Filters water from various sources with changing conditions and production requirements.**

**UF system removes TSS, organics, iron, manganese and other contaminants from a variety of water sources.**

**RO system removes dissolved solids, total organic carbon (TOC) and other colloidal contaminants.**

**Operable in single-pass mode with 300 gpm nominal flow rate or double-pass mode with 250 gpm nominal flow rate.**



## FEATURES

- Resilient PVDF “outside-in” hollow-fiber membranes
- Particle rejection to 0.02 microns
- Independent dual train design
- Quick RO conversion to single- or double-pass operating modes
- Automated chemical feed systems for dechlorination, pre-filtration, scale inhibiting and pH control
- Removes up to 99 percent of ionic contaminants and organics over 200 molecular weight
- Onboard touchscreen panel PC and PLC for real-time SCADA and system trending
- 1,500-gallon filtrate tank

## APPLICATIONS

- Iron/manganese removal from groundwater sources
- Wastewater recovery for process use or discharge
- Pretreatment for demineralizer systems
- Tertiary filtration
- Removal of color
- Reduction of dissolved solids, organic compounds and colloidal silica
- Water system outage support



### DIMENSIONS

#### Trailer

53'x8.6'x13.6' (LxWxH)

#### Operating Weight

85,000 pounds

### PRODUCT WATER

#### Turbidity

≤0.1 NTU

#### Silt Density Index

≤3

#### TOC\*

40-70% Removal

### CONNECTIONS

#### Inlet

6" 150# ANSI Flange

#### Product

4" 150# ANSI Flange

#### Waste

6" 150# ANSI Flange

### REQUIREMENTS

#### Max. Water Temp.

100° F

#### Inlet Pressure

5-100 psig

#### Inlet Turbidity

75 (peak to 200) NTU

#### Electrical

480 VAC, 400 FLA, 3PH

#### Influent Flow

Up to 600 gpm

#### Effluent Flow

Up to 300 SP/250 DP

### INSTRUMENTATION

Product water flow meters

pH and conductivity meters

Inlet and turbidity meters

Touch screen panel PC and PLC for real-time

SCADA and system trending

Digital pressure transducers

Electrically efficient VFD-controlled pumps

